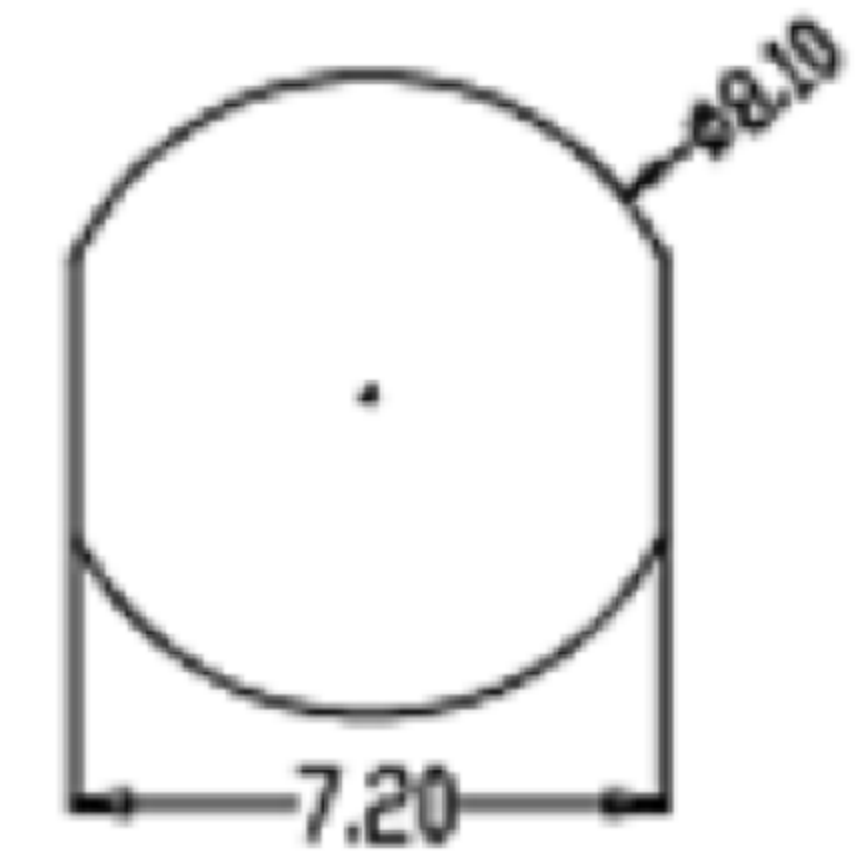
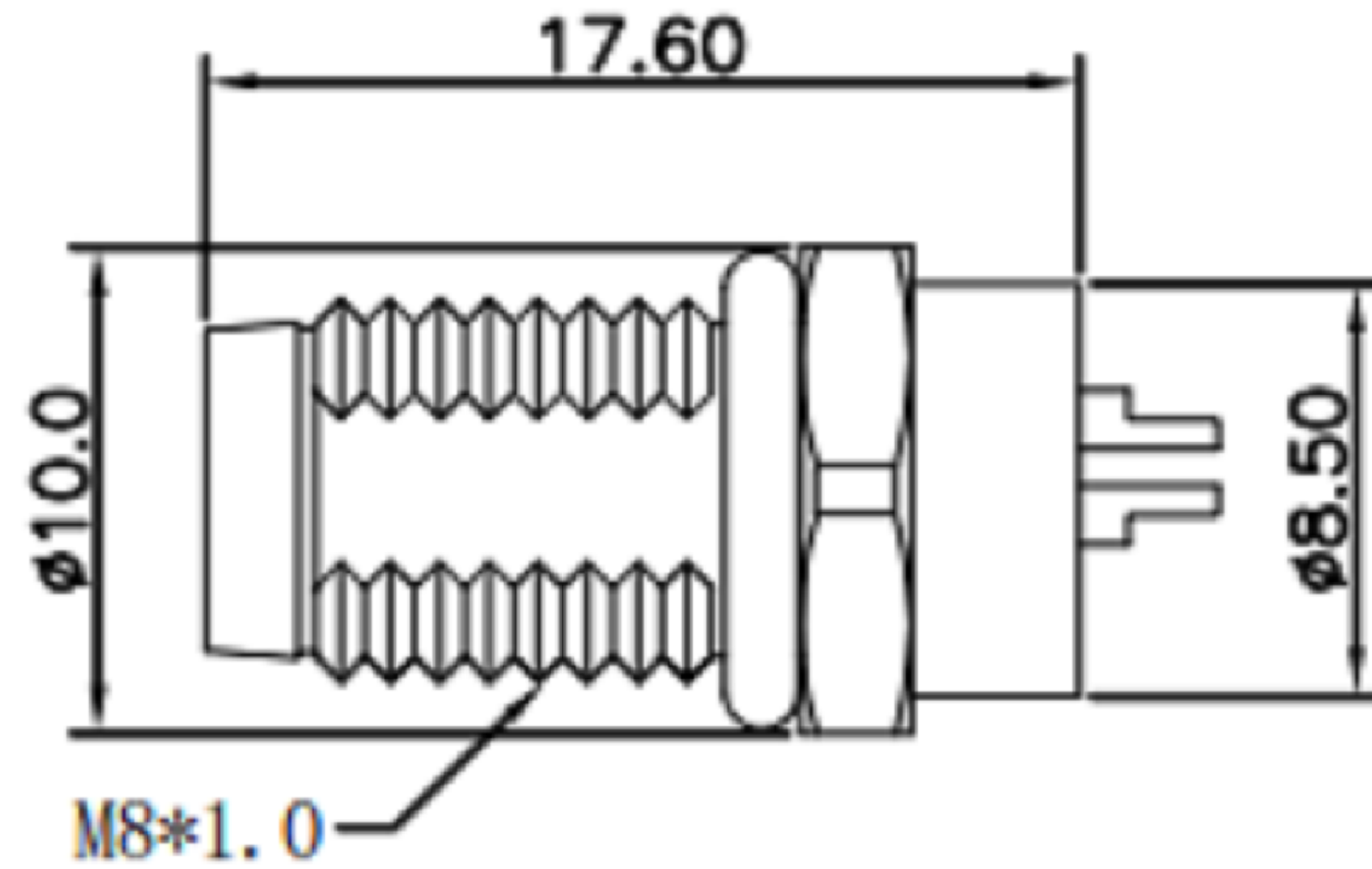
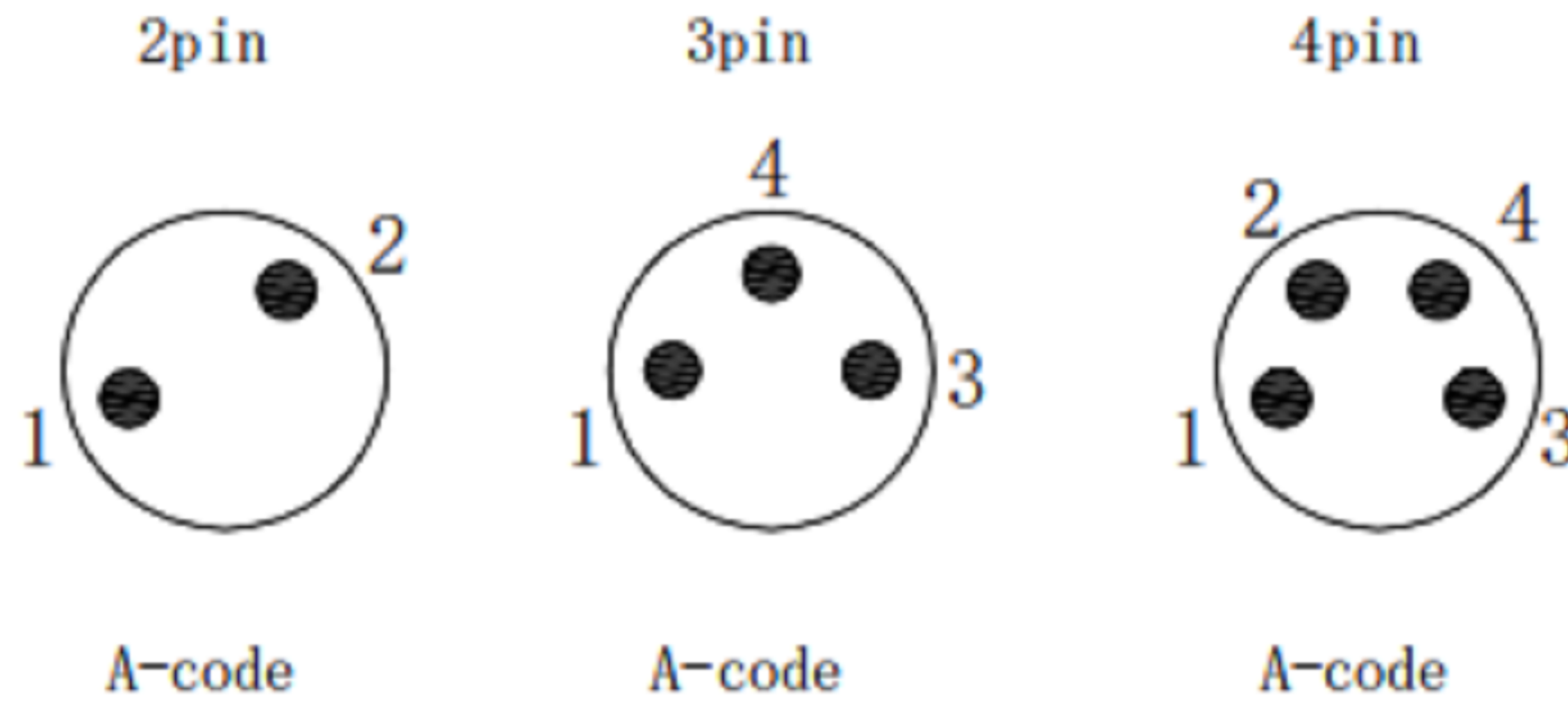


Scale drawing/尺寸图



Recommended Panel Cut-out

Pin assignment front view/针位分布前视图



Order data/订货信息

Contacts/芯数	Coding	Part number/料号	Qty
02Pin	A-code	M08A02-03-033	1000pcs
03Pin	A-code	M08A03-03-033	1000pcs
04Pin	A-code	M08A04-03-033	1000pcs

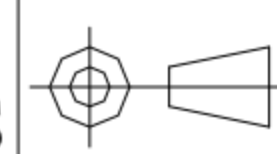
Specifications/技术参数

Pin numbers/芯数	02 Pin	03 Pin	04 Pin			
Rated voltage/额定电压	60V	60V	60V			
Rated current/额定电流	4A	4A	4A			
Standards/regulations/标准	IEC 61076-2-104					
Termination接线方式	Dip-Solder/浸焊					
Connector locking system/锁紧方式	Screw螺锁					
Degree of protection/防护等级	IP67/IP68					
Mechanical operation/插拔次数	100 mating cycles Min					
Ambient temperature (operation)/工作温度	-25°C~+85°C					
Contact resistance/接触电阻	≤5mΩ					
Insulation resistance/绝缘电阻	≥1000MΩ					
Connector body material/胶芯材料	PA66					
Pin material/端子材料	Brass with gold plated					
Nut and shell material/螺母和铜壳材料	Brass with nickel plated					
Gasket material/胶圈材料	Fluorine ring/氟胶圈					
Black glue/黑色胶水	Epoxy resin/环氧树脂					

東莞市高迪電子有限公司
DONG GUAN GAO DI ELECTRONICS CO., LTD

TOLERANCE UNLESS OTHERWISE STATED: Up to 5 ±0.2, Above 5 ~ 15 ±0.3, Above 15 ~ 30 ±0.4, Above 30 ~ 50 ±0.5, Angle ±0.3

3RD. ANGEL'S



UNITS

MM

DRAWN BY:	DATE	MATL	TITLE	CONNECTOR
Jack Lu	12/13/19	FINISH	MODLE	M08XXX-03-033
CHECKED BY:	DATE	SCALE	DWG NO.	
Jacky Chen	12/13/19	1:1		
APPROVED BY:	DATE	SHEET NO.	PART NO.	
Tony Kao	12/13/19	1 of 1		

ITEM NO.	DESCRIPTION	DRAWN	DATE